



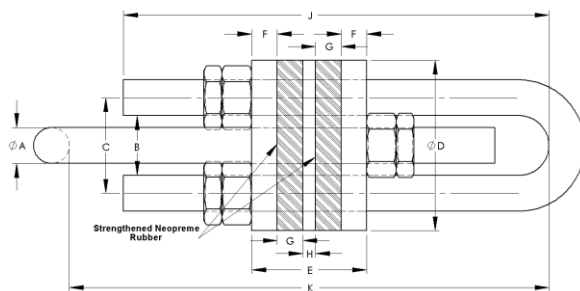
Head Office -
Griffin-Woodhouse Limited
 Woods Lane, Cradley Heath
 West Midlands B64 7AR
United Kingdom

T +44 (0) 1299 861829
 F +44 (0) 1299 861830
 E sales@gwec.co.uk

Ports & Terminals - Quayside Fenders

Shock Load Prevention Cell

(Product Code STDR - 5102 - 3)



Located within Fender Panel Support Chain Assemblies, Shock Load Prevention Cells are designed to absorb the sudden forces generated by fender reaction during berthing. They may also be used to adjust, tension and secure fender panel arrangements. Assemblies are supplied galvanised as standard.

SWL (kN)	Dimensions (mm)					
	A	B	C	D	E	K (at midpoint)
80	24	38	62	120	102	305.5 (+/-25.5)
130	30	48	78	150	102	420.5 (+/-55.5)
180	35	60	95	180	135	574.5 (+/-92.5)
250	42	70	112	200	135	648.5 (+/-104.5)
320	45	80	125	220	135	705.5 (+/-121.5)
410	52	83	135	245	180	812 (+/-132)
504	56	100	156	275	180	868.5 (+/-146.5)
726	68	112	180	300	230	1151 (+/-207)
1000	76	129	200	350	230	1263 (+/-234)