



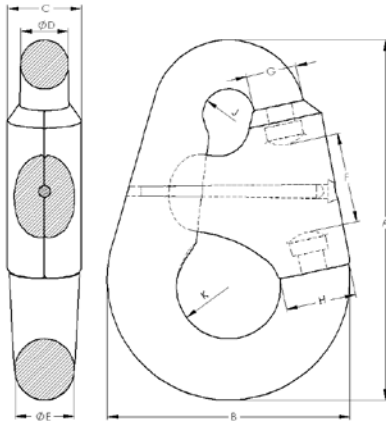
Head Office -
Griffin-Woodhouse Limited
 Woods Lane, Cradley Heath
 West Midlands B64 7AR
United Kingdom

T +44 (0) 1299 861829
 F +44 (0) 1299 861830
 E sales@gwec.co.uk

Offshore - Mooring Chain & Accessories

Detachable Anchor Connecting Link

(Product Code STDR - 1700)



No.	Chain ø Dc (mm)	R3			R3S		R4	
		PL* (kN)	PL** (kN)	MBL*** (kN)	PL*** (kN)	MBL*** (kN)	PL*** (kN)	MBL*** (kN)
7	62 - 79	3480	3669	5244	4233	5856	5079	6443
8	81 - 92	4590	4838	6916	5582	7722	6699	8497
9	94 - 95	4862	5125	7326	5913	8180	7096	9001
10	97 - 102	5519	5817	8315	6712	9285	8054	10217
11	103 - 108	6104	6434	9197	7424	10270	8909	11301
12	110 - 114	6709	7071	10109	8159	11287	9791	12420

No.	Dimensions									
	A	B	C	D	E	F	G	H	J	K
7	568	376	121	81	97	149	86	113	52	76
8	654	419	134	92	124	153	102 x 112	130	54	79.5
9	692	435	146	98	130	159	124 x 135	141	57	89
10	900	580	194	122	168	194	130 x 148	181	73	108
11	940	616	206	127	175	203	156	198	76	111
12	991	948	216	133	184	216	165 x 167	210	105	114

* per Table 1, Sec. 3 - ABS Guide for the Certification of Offshore Mooring Chain

** per Table 1, Ch.2 Sec.2 - DNVGL Offshore Standard DNVGL-OS-E302, Offshore Mooring Chain

*** per both * & ** above