



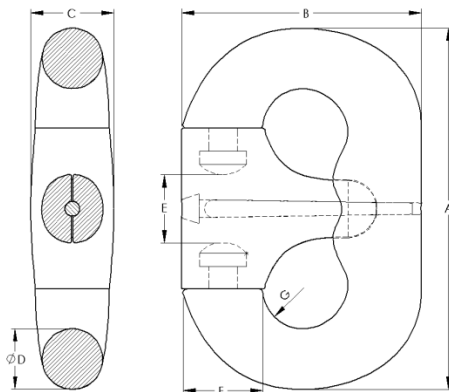
Head Office -  
**Griffin-Woodhouse Limited**  
 Woods Lane, Cradley Heath  
 West Midlands B64 7AR  
**United Kingdom**

T +44 (0) 1299 861829  
 F +44 (0) 1299 861830  
 E [sales@gwec.co.uk](mailto:sales@gwec.co.uk)

Offshore - Mooring Chain & Accessories

## Detachable Chain Connecting Link

(Product Code STDR - 1800)



Chain ø Dc (mm)	R3			R3S		R4	
	PL* (kN)	PL** (kN)	MBL*** (kN)	PL* (kN)	PL** (kN)	MBL*** (kN)	PL* (kN)
68 - 70	2785	2935	4196	3387	4685	4064	5156
71 - 73	3010	3172	4535	3660	5064	4392	5572
75 - 76	3242	3417	4884	3942	5454	4731	6001
78 - 79	3480	3669	5244	4233	5856	5079	6443
81 - 83	3809	4015	5739	4633	6409	5559	7052
84 - 86	4063	4283	6122	4942	6836	5930	7522
87 - 89	4323	4557	6514	5258	7274	6310	8004
90 - 92	4590	4838	6916	5582	7722	6699	8497
94 - 95	4862	5125	7326	5913	8180	7096	9001
97 - 98	5140	5418	7744	6251	8647	7501	9515
100 - 102	5519	5817	8315	6712	9285	8054	10217
105	5809	6123	8753	7065	9773	8478	10754
111	6404	6750	9650	7789	10775	9347	11856
114	6709	7071	10109	8159	11287	9791	12420

\* per Table 1, Sec. 3 - ABS Guide for the Certification of Offshore Mooring Chain

\*\* per Table 1, Ch.2 Sec.2 - DNVGL Offshore Standard DNVGL-OS-E302, Offshore Mooring Chain

\*\*\* per both \* & \*\* above



Head Office -  
**Griffin-Woodhouse Limited**  
 Woods Lane, Cradley Heath  
 West Midlands B64 7AR  
**United Kingdom**

T +44 (0) 1299 861829  
 F +44 (0) 1299 861830  
 E [sales@gwec.co.uk](mailto:sales@gwec.co.uk)

Offshore - Mooring Chain & Accessories

## Detachable Chain Connecting Link

(Product Code STDR - 1800)

Chain ø Dc (mm)	Dimensions						
	A	B	C	D	E	F	G
68 - 70	419	271	87	70	81	87	47
71 - 73	438	283	91	73	85	91	49
75 - 76	457	296	95	76	88	95	51
78 - 79	476	308	99	79	92	99	53
81 - 83	495	320	103	83	96	103	55
84 - 86	514	333	107	86	99	107	57
87 - 89	533	345	111	89	103	111	60
90 - 92	553	357	115	92	107	115	62
94 - 95	572	370	119	95	111	119	64
97 - 98	591	382	128	98	114	123	66
100 - 102	610	394	132	102	118	127	68
105	629	419	147	105	127	132	70
111	667	456	167	111	138	140	75
114	686	480	190	114	147	144	77